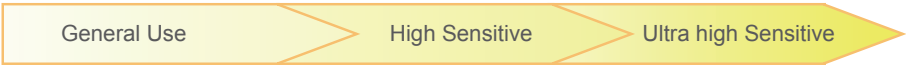


Chemi-Lumi One Series

Chemi-Lumi One is a series of high sensitive luminol-based chemiluminescence assay kits for Western Blotting. We offer three types of chemiluminescent substrates for Western blot detection with horseradish peroxidase enzyme (HRP).

Selection Guide

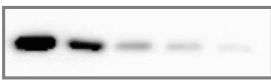


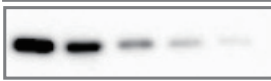
Product Name	Chemi-Lumi One L	Chemi-Lumi One Super	Chemi-Lumi One Ultra
Product No.	07880	02230	11644
Usage	General Use	High Sensitive	Ultra high Sensitive
Lower Detection Limit	Low-picogram	Mid-femtogram	Low-femtogram
Required Working Solution	Approx. 0.125 ml / cm ²	Approx. 0.1 ml / cm ²	Approx. 0.1 ml / cm ²
Suggested Antibody Dilution	Primary: 1:1,000-1:5,000 Secondary: 1:20,000-1:100,000	Primary: 1:1,000-1:20,000 Secondary: 1:20,000-1:200,000	Primary: 1:5,000-1:100,000 Secondary: 1:100,000-1:500,000
Reaction Period	1 min.	1 min.	5 min.
Comparable to	ECL SuperSignal Pico	ECL Prime SuperSignal Dura	ECL Select SuperSignal Femto
Sensitivity	 <p>Conc. of IgG HRP-linked</p> <p>900 300 100 33.3 11.1 3.7 1.2 412 137 46 15 3</p> <p>Chemi-Lumi One L</p> <p>Chemi-Lumi One Super</p> <p>Chemi-Lumi One Ultra</p> <p><Condition> Antigen: Anti-Mouse IgG (Goat), HRP Conjugated (Santa Cruz, sc-2005) Detection: L (1 min.), Super (1 min.) and Ultra (5 min.) Detector: LAS-3000 Super mode (Analyze 3 min. later after reaction with each substrate) Expose time: 30 min.</p>		

Chemi-Lumi One L

- » Suitable for optimization approach of target proteins
- » Reasonable price in Chemi-Lumi One Series
- » Detect wide range of protein concentration

Comparison of sensitivity with competitors

Chemi-Lumi One L offers the similar sensitivity as T and W company's products and higher sensitivity than G company's products.

β-Actin(ng)	50	25	12.5	6.25	3.13
Chemi-Lumi One L					
Competitor G					
Competitor T					
Competitor W					

<Condition>

Gel: 10% PAGE gel

Wash: 0.1% t-TBS(1x), pH7.4

Blocking: Blocking One

1st Ab: Anti-β-Actin Mouse Monoclonal Antibody, (SantaCruz sc-47778), 1:1,000

2nd Ab: Anti-Mouse IgG (Goat), HRP Conjugated, (SantaCruz sc-2005), 1:20,000

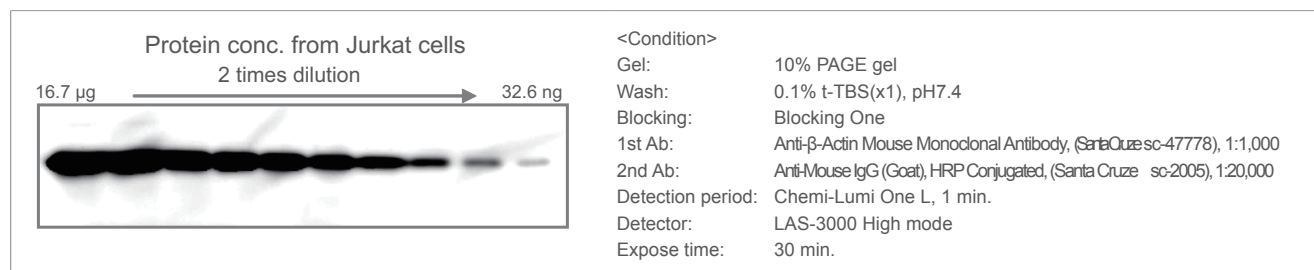
Detection period: Chemi-Lumi One L, 1 min.
Competitor G, T, W 1min.

Detector: LAS-3000 High mode

Expose time: 5 min.

Comparison of detection limit

Chemi-Lumi One L is suitable for detection of unknown protein concentration or optimization conditions.

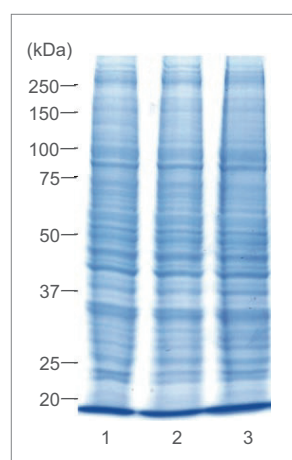


Detection of transcription factor of SREBP-1 and ChREBP

Transcription factor of SREBP-1 and ChREBP are detected after extraction of proteins such as nucleus or cytoplasm with RIPA Buffer.

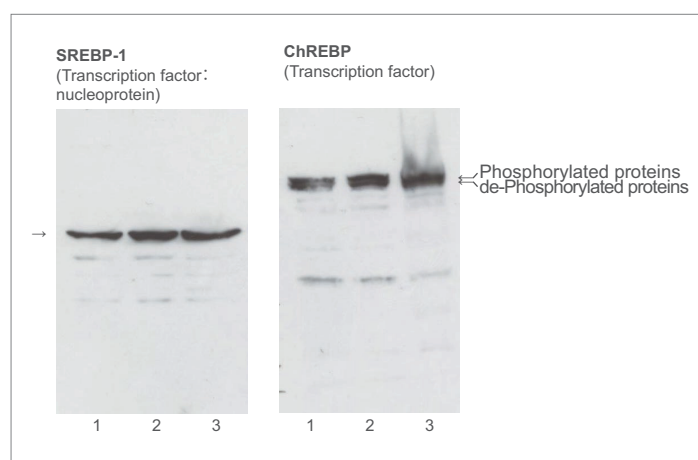
CBB Stain

(Stained with CBB Stain One)



Western blotting

(Blotting: Blocking One, Detection: Chemi-Lumi One L)



Lane 1: RIPA (w/ SDS), 2: RIPA (w/o SDS), 3: B Company (w/ SDS)

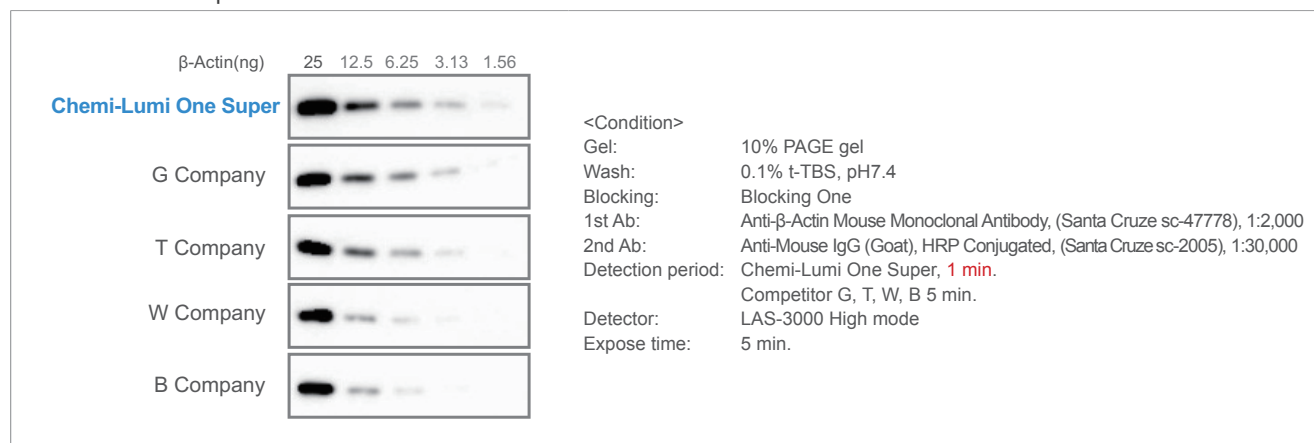
Data courtesy of associate professor Tatsuya Moriyama, Faculty of Agriculture, Kinki University

Chemi-Lumi One Super

- » Detects proteins at Mid-femtogram level with low background
- » Rapid substrate processing of blot
- » Applicable extension of exposure time and detectable lower expression level proteins

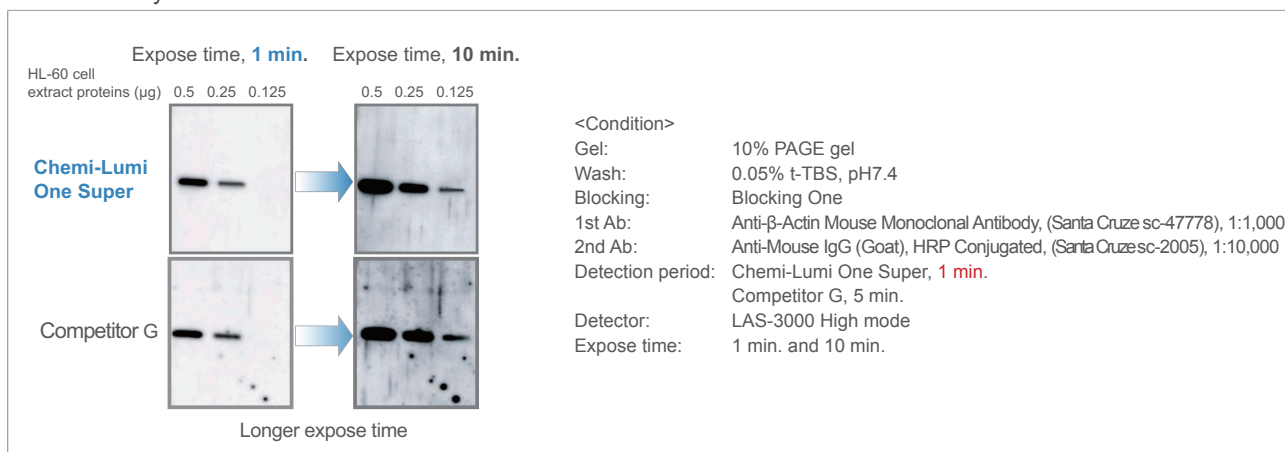
Comparison of sensitivity with competitors

Chemi-Lumi One Super is the most sensitive of competitors under the above condition, and its exposure time is only 1 min., while others are required 5 min.



Comparison of background

Chemi-Lumi One Super performs under lower background, so users enable expose time to be longer for achieving more sensitive analysis.

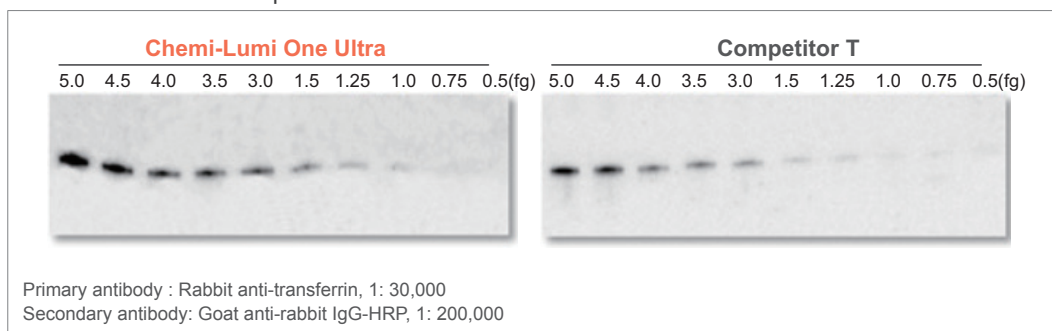


Chemi-Lumi One Ultra

- » **The most sensitive in Chemi-Lumi One Series**
- » **Longer signal duration**
- » **Applicable wider experimental condition due to low background**

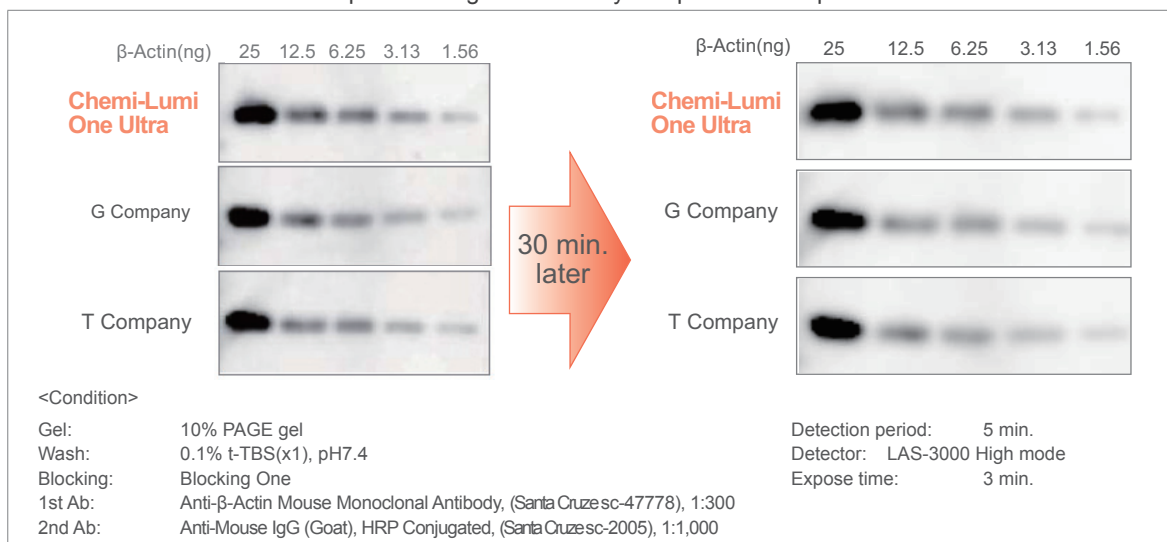
Comparison of sensitivity with competitors 1

Chemi-Lumi One Ultra is an extremely sensitive chemiluminescent substrate. Western blot of identical transferrin samples. The membranes were incubated with substrate that was prepared according to the manufacturers' instructions. The membranes were exposed to film for 2 minutes.



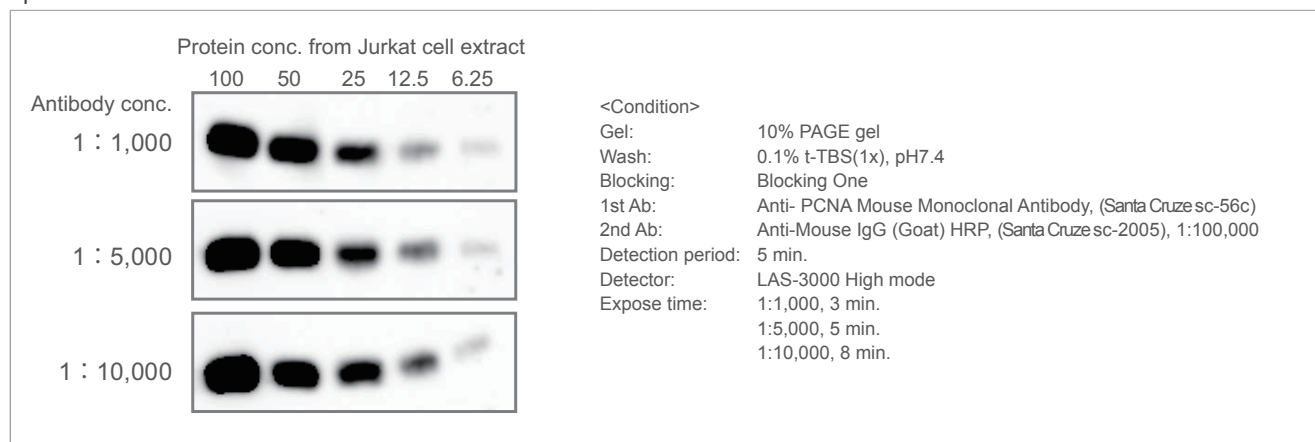
Comparison of sensitivity with competitors 2

Chemi-Lumi One Ultra shows equal to or higher sensitivity compared to competitors'.



Comparison of Abs concentration

Due to low background, Chemi-Lumi One Ultra is applicable to wide range of primary antibodies, and makes it easy to optimize condition.



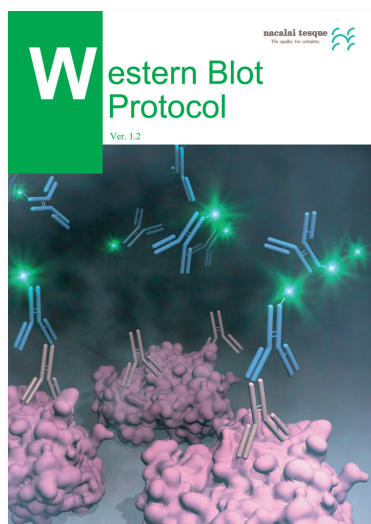
Ordering Information

Product Name	Storage	Product Number	PKG Size
Chemi-Lumi One L Luminol 250 ml, Peroxide 250 ml Sufficient substrate for 4,000 cm ² of blotting membrane	0-10°C	07880-70	1 kit
Chemi-Lumi One Super Luminol 50 ml, Peroxide 50 ml Sufficient substrate for 1,000 cm ² of blotting membrane	0-10°C	02230-30	1 kit
Chemi-Lumi One Ultra Luminol 50 ml, Peroxide 50 ml Sufficient substrate for 1,000 cm ² of blotting membrane	0-10°C	11644-40	1 kit

[Patents]

Chemi-Lumi One Ultra is manufactured and patented by Cyanagen s.r.l and protected by US7803573; EP1962095; US7855287; EP1950207 US2012009603(A1); CA2742025; EP2405016 and foreign equivalents and other pending patents

Western Blot Protocol



Western Blot Protocol covering

- 1) Transfer
- 2) Confirming Transfer
- 3) Blocking
- 4) Detection
- 5) Western Blot Stripping

Please visit our website at www.nacalai.com to download PDF file or contact us to request a copy.

For research use only, not intended for diagnostic or drug use.

NACALAI TESQUE, INC.

Nijo Karasuma, Nakagyo-ku, Kyoto 604-0855 JAPAN

TEL : +81-(0)75-251-1730

FAX : +81-(0)75-251-1763

Website : www.nacalai.com

E-mail : info.intl@nacalai.com